

R8. Percentage increase/decrease

NON CALC

OCR

(c) Decrease 650 by 40%.

(c) [3]

(c) Decrease 650 by 40%.

R8

40% of 650

$$40\% \times 650 = 260$$

$$10\% = 65$$

$$40\% = 260$$

$$650 - 260$$

=

390

(c)

..... [3]



- (b)** In 2016, Pippa paid £1650 rent.
In 2017, the rent increased by 14%.

Calculate the amount of rent she paid in 2017.

(b) £ [3]

- (b) In 2016, Pippa paid £1650 rent.
In 2017, the rent increased by 14%.

R8

Calculate the amount of rent she paid in 2017.

$$\begin{array}{r} 14\% \text{ of } \pounds 1650 \\ \times \\ \hline = \pounds 231 \end{array}$$

$$\pounds 1650 \times 1.14$$

$$\pounds 1650 + \pounds 231$$

(b) £ £1881 [3]

17 The price of a computer was £750.

Created by W Neill

In a sale the price is reduced by 20%.

On the final day the **sale price** is reduced by a further 12%.

How much is saved in total by buying the computer on the final day of the sale?

£ [5]

17 The price of a computer was £750.

Created by W Neill

R8 In a sale the price is reduced by 20%.
On the final day the **sale price** is reduced by a further 12%.

$$750 \times 0.8 \times 0.88$$

How much is saved in total by buying the computer on the final day of the sale?

20% of £750	}	<u>Final day</u>	}	<u>Saved</u>
= £150		12% of £600		£750 - £528
£750 - £150		= £72		= £222
= £600		= £600 - £72		
		= £528		222
			£	[5]

7 Naomi is given a 10% pay decrease.

R8 Her new wage is £252 per week.

R12 What would be her weekly wage if, instead, she had received a 10% pay increase?

£ [5]

7 Naomi is given a 10% pay decrease.

R8 Her new wage is £252 per week.

R12 What would be her weekly wage if, instead, she had received a 10% pay increase?

$$\begin{array}{l} \div 9 \left\{ \begin{array}{l} £252 = 90\% \\ £28 = 10\% \end{array} \right. \div 9 \\ \times 10 \left\{ \begin{array}{l} £280 = 100\% \end{array} \right. \times 10 \end{array}$$

$$\begin{array}{r} 28 \\ 9 \overline{) 252} \end{array}$$

10% increase

$$£280 + 10\%$$

$$£280 + £28$$

£ £308 ✓ [5]

$$\begin{array}{r} 280 \\ + 28 \\ \hline 308 \end{array}$$

Edexcel

- 22** In a sale, the price of a cooker is reduced by 50%
At the end of the sale, the sale price of the cooker is increased by 50%

Betty says,

“The cooker is now the same price as it was before the sale.”

Is Betty correct?
Explain why.

.....

.....

.....

(Total for Question 22 is 2 marks)

- 22 In a sale, the price of a cooker is reduced by 50%
At the end of the sale, the sale price of the cooker is increased by 50%

Betty says,

“The cooker is now the same price as it was before the sale.”

Is Betty correct?
Explain why.

$$\begin{array}{l}
 \text{Cooker} = \text{£}120 \quad \checkmark \\
 \text{Reduced by 50\%} \\
 50\% \text{ of } \text{£}120 = \text{£}60 \quad \rightarrow \text{New Cost} = \text{£}60 \\
 \text{Increase by 50\%} \\
 50\% \text{ of } \text{£}60 = \text{£}30 \quad + \quad \left. \begin{array}{l} \\ \\ \end{array} \right\} \text{£}90 \quad \checkmark
 \end{array}$$

(Total for Question is 2 marks)

No, I have used a counter example to show why

20 Azmol is paid £1500 per month.

He is going to get a 3% increase in the amount of money he is paid.

Work out how much money Azmol will be paid per month after the increase.

20 Azmol is paid £1500 per month.

He is going to get a 3% increase in the amount of money he is paid.

Work out how much money Azmol will be paid per month after the increase.

$$10\% = \text{£}150$$

$$1\% = \text{£}15$$

$$3\% = \text{£}45$$

x3

x3

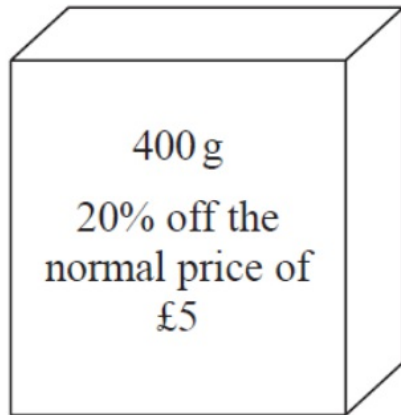
$$\text{£}1545 \checkmark$$

18 Food Mart and Jan's Store sell boxes of the same type of breakfast cereal. Video Created by W Neill

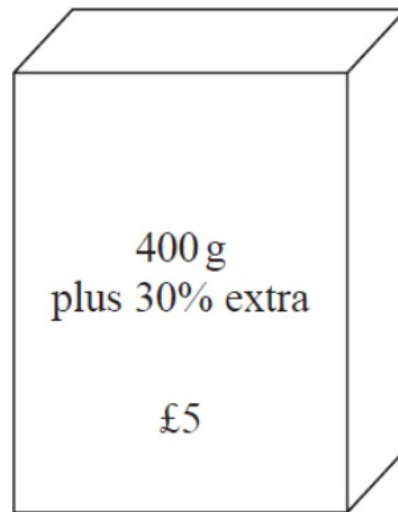
R18 Each shop has a special offer.

R8

Food Mart



Jan's Store

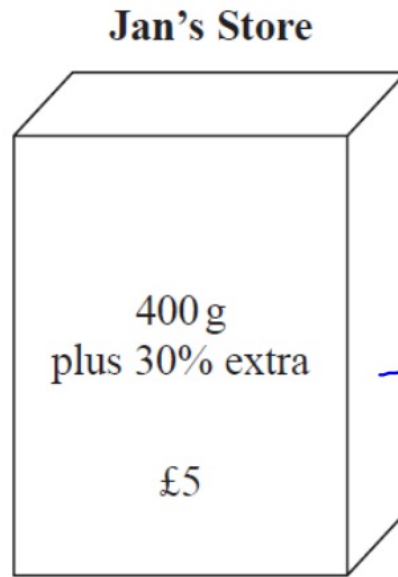
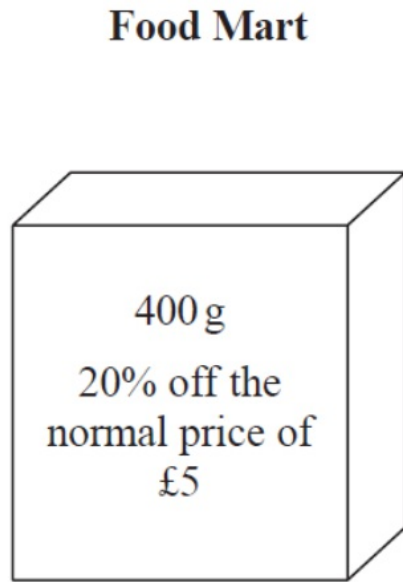


Which box of cereal is the better value for money?
You must show your working.

(Total for Question 18 is 4 marks)

18 Food Mart and Jan's Store sell boxes of the same type of breakfast cereal.

R18 Each shop has a special offer.
R8



Food Mart 20% of £5.00
10% = £0.50
20% = £1.00
20% off = £4
£4 for 400g

JS... 30% of 400 = 120g
10% = 40g
30% = 120g
520g = £5

Which box of cereal is the better value for money?
You must show your working.

FM £4 = 400g
£1 = 100g
JS £5 = 520g
£1 = 104g
JS is better value ✓

(Total for Question 18 is 4 marks)

22 A bonus of £2100 is shared by 10 people who work for a company.
40% of the bonus is shared equally between 3 managers.

R6 The rest of the bonus is shared equally between 7 salesmen.

R7

R8 One of the salesmen says,

“If the bonus is shared equally between all 10 people I will get 25% more money.”

Is the salesman correct?

You must show how you get your answer.

(Total for Question 22 is 5 marks)

22 A bonus of £2100 is shared by 10 people who work for a company.
40% of the bonus is shared equally between 3 managers.

R6 The rest of the bonus is shared equally between 7 salesmen.

R7

R8 One of the salesmen says,

“If the bonus is shared equally between all 10 people I will get 25% more money.”

Is the salesman correct?

You must show how you get your answer.

Handwritten solution:

40% of £2100 }
 10% = £210 }
 40% = £840 }
 60% }
 £2100 - 840 }
 840 }
1260 → 7 salesmen

180 ... each salesman gets £180
 $7 \overline{) 1260}$
 if shared equally ... 10% of £2100 = £210 ✓

25% ($\frac{1}{4}$) of £180 ... £45
 if he got 25% more ... £180 + £45 = £225
 No he is not correct as £225 < £210

(Total for Question is 5 marks)

11 Here are two rectangles.

R8
N39



A



B

The length of rectangle **B** is 25% greater than the length of rectangle **A**.

The width of rectangle **B** is $\frac{3}{5} \times$ the width of rectangle **A**.

Find the fraction $\frac{\text{area of rectangle B}}{\text{area of rectangle A}}$

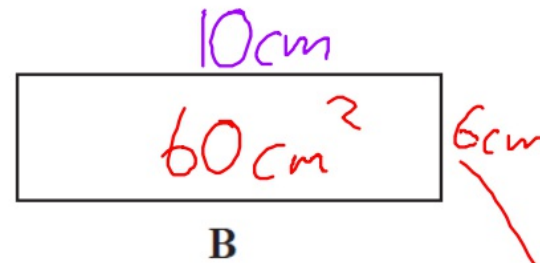
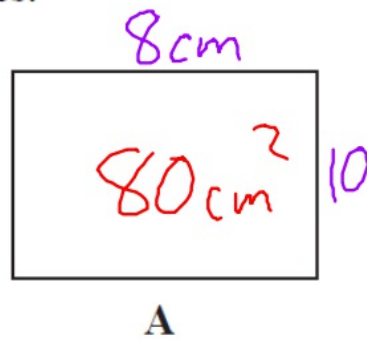
Give your answer in its simplest form.

.....
(Total for Question 11 is 3 marks)

11 Here are two rectangles.

R8
N39

25% of 8
= 2cm



Give
these
numbers

$$\frac{3}{5} \text{ of } 10 = 6$$

The length of rectangle **B** is 25% greater than the length of rectangle **A**.

The width of rectangle **B** is $\frac{3}{5} \times$ the width of rectangle **A**.

Find the fraction $\frac{\text{area of rectangle B}}{\text{area of rectangle A}}$

Give your answer in its simplest form.

$$\frac{60}{80}$$

$$\frac{3}{4} \checkmark$$

(Total for Question 11 is 3 marks)

AQA

18 Bottles of drink are for sale at three shops.

Video created by W Neill

The normal price of a bottle is the same at each shop.

N13
R8

Shop A
Buy 1 bottle
Get 2 more bottles at half price

Shop B
Buy 2 bottles
Get 3 more bottles at half price

Shop C
30% off a bottle

What is the cheapest way to buy **exactly** 8 bottles?

You can buy from more than one shop.

You **must** show your working.

[3 marks]

Answer _____

18 Bottles of drink are for sale at three shops.
 The normal price of a bottle is the same at each shop.

Video created by W Neill

bottle = £1

N13
R8

Shop A
 Buy 1 bottle
 Get 2 more bottles at half price

Shop B
 Buy 2 bottles
 Get 3 more bottles at half price

Shop C
 30% off a bottle

30% off of £1
 = 30p

<u>A</u>	<u>B</u>	<u>C</u>
£1	£1	70p
50p	£1	70p
50p	50p	70p
£1	50p	70p
50p	50p	70p
50p	£1	70p
£1	£1	70p
50p	50p	70p
50p	50p	70p
	50p	70p

£1.40

What is the cheapest way to buy **exactly** 8 bottles?
 You can buy from more than one shop.
 You **must** show your working.

6 bottles from A
 and 2 bottles from C.

Answer _____