

N15 Adding and Subtracting with Negatives

OCR

4 (a) Fill in each missing number.

(i) $24 - \dots\dots\dots = 36$ [1]

(ii) $\sqrt{\dots\dots\dots} = 16$ [1]

(b) The length of a line is 10.4 cm, correct to 1 decimal place.

Write down the shortest possible length of the line.

(b) $\dots\dots\dots$ cm [1]

4 (a) Fill in each missing number.

(i) $24 - \underline{-12} = 36$ [1]

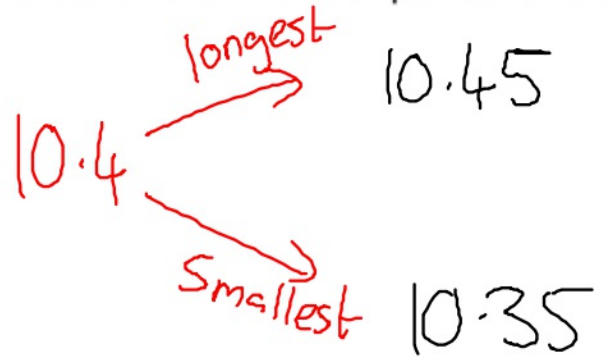
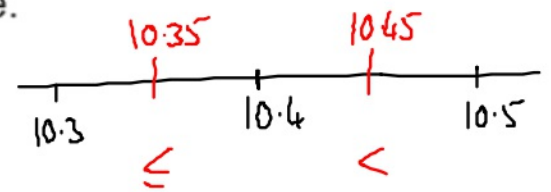
$24 + 12 = 36$

$\sqrt{?} = 16 \dots 16^2$

(ii) $\sqrt{\underline{256}} = 16$ [1]

(b) The length of a line is 10.4 cm, correct to 1 decimal place.

Write down the shortest possible length of the line.



(b) $\underline{10.35}$ cm [1]

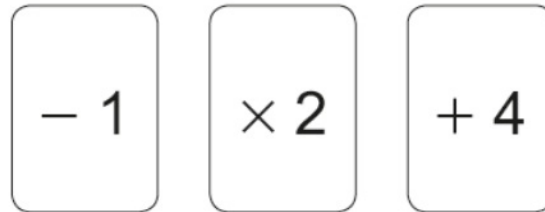
(b) A counter has 3 on one side and 5 on the other.

Lena flips the counter.

N15/16

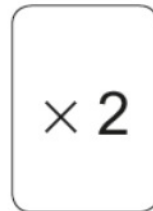
She then picks one of these three cards at random.

Created by W Neill



Lena puts the card next to the counter and works out the answer.

For example



gives the answer 10.

Find the probability that Lena gets an answer **less than 8**.

You must show your working.

(b) A counter has 3 on one side and 5 on the other.

Lena flips the counter.

She then picks one of these three cards at random.



Lena puts the card next to the counter and works out the answer.

For example



gives the answer 10.

Find the probability that Lena gets an answer less than 8.

You must show your working.

$$\frac{4}{6}$$

Created by WNeill

$$5 \text{ } -1 = 4 \checkmark$$

$$5 \text{ } \times 2 = 10$$

$$5 \text{ } +4 = 9$$

$$3 \text{ } -1 = 2 \checkmark$$

$$3 \text{ } \times 2 = 6 \checkmark$$

$$3 \text{ } +4 = 7 \checkmark$$

N15/16

Edexcel

AQA

4 Circle the number that is 7 less than -12

[1 mark]

N15

-19

-5

5

19

4 Circle the number that is 7 less than -12

[1 mark]

N15

-19

-5

5

19

Video created by W Neill

2 Circle the number that is 5 **less** than -2

[1 mark]

N15

-10

-7

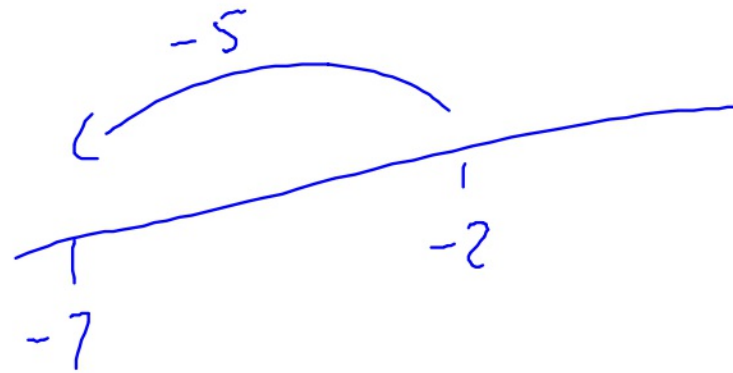
-3

3

2 Circle the number that is 5 less than -2

[1 mark]

N15



1 Work out $(-3) + (-8)$
Circle your answer.

[1 mark]

N15

-5

5

-11

11

1 Work out $(-3) + (-8)$
Circle your answer.

[1 mark]

N15

-5

5

-11

11

$$-3 + -8$$

$$-3 - 8$$